



Employment and Community First (ECF) CHOICES Member Training



1

Agenda

- ❖ Overview of the Employment and Community First (ECF) CHOICES program and self-direction
- ❖ The roles and responsibilities within the program and Consumer Direct Tennessee (CDTN)
- ❖ Reporting Requirements
- ❖ Time Approval in CareAttend and DirectMyCare



2



ECF CHOICES Overview

- ❖ TennCare and the Department of Disability and Aging (DDA) held joint forums in 2013-2014 to discuss program options
- ❖ ECF CHOICES is designed to serve people with intellectual and/or developmental disabilities
- ❖ Focuses on employment and community participation



ECF CHOICES Overview

- ❖ Members will have a Support Coordinator, employed by their Managed Care Organization (MCO)
- ❖ The Support Coordinator helps develop a Person-Centered Support Plan (PCSP)
- ❖ The PCSP helps define the member's status, future status and the supports needed to achieve their goals



5

Self Direction in ECF CHOICES

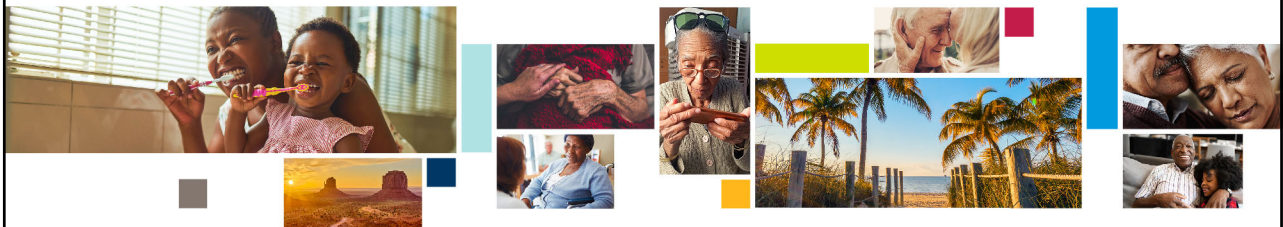
- ❖ Members enrolled in the ECF CHOICES program can choose self-direction
- ❖ ECF CHOICES offers four service options:
 - ❖ Personal Assistance
 - ❖ Supportive Home Care
 - ❖ Respite
 - ❖ Community Transportation



6

Personal Assistance

- ❖ Designed to assist an individual with daily activities of living
- ❖ May be provided outside of the home if the outcomes are consistent with the member's PCSP
- ❖ Services that are covered include the following:
 - ❖ Eating
 - ❖ Toileting
 - ❖ Grooming



7

Supportive Home Care

- ❖ Designed to assist a member who lives with their family with daily activities of living
- ❖ Insures the member's daily living needs and adequate functioning in their home
- ❖ Can include routine housecleaning and housekeeping activities performed only for the member, consisting of tasks that take place on a regular basis that do not involve hands-on care



8

Respite

- ❖ Offered as needed for caregiver relief
- ❖ Only applies for routine family or other caregivers that are not paid to support the member
- ❖ Can be up to 216 hours per member per calendar year



9

Community Transportation

- ❖ Helps the member get around the community
- ❖ Allows members to engage in typical day-to-day, non-medical activities
- ❖ When possible, family, neighbors, co-workers, carpools, or friends are utilized to provide this assistance without charge



10

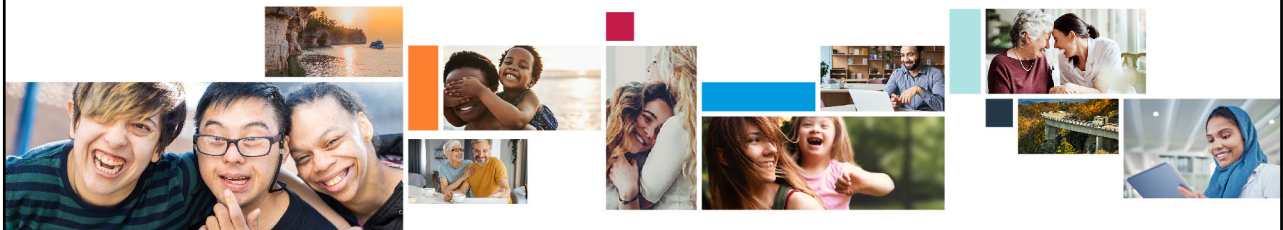


Roles and Responsibilities

11

Support Coordinator

- ❖ Meeting with the member to identify needs
- ❖ Educating the member on the ECF CHOICES program
- ❖ Working with the member to develop a Person-Centered Support Plan (PCSP)
- ❖ Completing the Risk Assessment and Risk Agreement
- ❖ Ensuring the self-direction backup plan meets the member's needs



12

Support Coordinator

- ❖ Authorizing individual budgeted services
- ❖ Monitoring service provision for quality and appropriateness
- ❖ Receiving and reviewing all reports submitted by CDTN and the Supports Broker
- ❖ Maintaining monthly phone contact and completing face-to-face home visits
- ❖ Assisting members and representatives in understanding individual services
- ❖ Ensuring the PCSP stays up-to-date



13

Supports Broker

- ❖ Assigned by CDTN
- ❖ Provides training and support to members and representatives on:
 - ❖ Understanding the program
 - ❖ Fulfilling the responsibilities of being an employer
 - ❖ Scheduling, training, and supervising self-directed workers
 - ❖ Aiding in developing the initial backup plan



14

Consumer Direct Tennessee (CDTN)

❖ The CDTN website is available to assist with many other questions and concerns at:

www.ConsumerDirectTN.com



17

Member

- ❖ Finding, interviewing, hiring and firing workers
- ❖ Determining worker duties and developing job descriptions
- ❖ Training workers to provide personalized support
- ❖ Scheduling and supervising workers
- ❖ Ensuring there are enough workers hired to provide necessary support
- ❖ Ensuring the worker enters time, and approving the hours submitted



18

Member

- ❖ Ensuring that no worker provides more than 40 hours of support per week
- ❖ Managing services
- ❖ Evaluating worker performance
- ❖ Setting wages
- ❖ Reviewing and ensuring proper documentation for services provided
- ❖ Developing and implementing the backup plan



19

Reporting



20

Dignity of Choice

- ❖ The right of a person to make an informed decision to engage in experiences which are necessary for personal growth
- ❖ The occurrence and reporting of a Reportable Event does not necessarily mean that anyone should have done something differently to prevent the Reportable Event
- ❖ The ECF CHOICES program is designed to encourage members to pursue and achieve their goals, which can mean taking informed, reasonable risks



21

Reporting

- ❖ As a worker in a TennCare program, you are required to report any instances of Medicaid fraud and abuse, as well as the abuse, neglect, or exploitation of a member
- ❖ Reportable events are separated into Tier One and Tier Two events, with other events that also need to be reported.
- ❖ Any reportable event needs to be reported via a Reportable Event Form (REF) on the DDA website to CDTN within four hours.



22

Tier One Events

Tier One events include:

- ❖ Alleged emotional or psychological abuse when medical intervention or treatment is necessary
- ❖ Alleged exploitation exceeding \$1000
- ❖ Alleged neglect which requires medical intervention or treatment and all neglect that is potentially felonious in nature when there is not an injury



23

Tier One Events

Tier One events include:

- ❖ Alleged physical abuse when medical intervention or treatment is necessary
- ❖ Alleged sexual abuse
 - ❖ Excluding when an exception is granted by DDA, members are required to immediately remove a worker or volunteer alleged to have acted in a manner consistent with physical or sexual abuse until DDA has completed their investigation



24

Reporting Tier One Events

If a Tier One Reportable Event, or any other event, poses an immediate threat to the health and safety of a member, workers are required to remain with the member until the threat is removed or the member receives needed medical treatment, if appropriate.

All abuse, neglect, and exploitation events also must be reported to Adult Protective Services (APS) or the Department of Children's Services (DCS) within four hours.



APS and DCS Reporting

To contact APS or DCS regarding an event, use their toll-free number:

- ❖ 1-888-277-8366 for APS, or 1-877-237-0004 for DCS

Additionally, local offices can be reached with these phone numbers

- ❖ Knoxville – 1-865-594-5685 for APS, or 1-865-329-8879 for DCS
- ❖ Chattanooga – 1-423-634-6624 for APS, or 1-423-296-1234 for DCS
- ❖ Nashville – 1-615-532-3491 for APS, or 1-615-360-4320 for DCS
- ❖ Memphis – 1-901-320-7220 for APS, or 1-901-578-4001 for DCS



APS and DCS Reporting

Callers will need to provide:

- ❖ Name of the member
- ❖ Address
- ❖ Age
- ❖ Phone Number
- ❖ Specifics of the reportable event



29

Tier Two Events

- ❖ Must be reported to DDA investigation within one business day
- ❖ Report the event to CDTN, the Supports Broker, or online to DDA using the REF Submission Link



30

Tier Two Events

Tier Two events include:

- ❖ Suspicious injury in which abuse or neglect is suspected but does not require medical treatment or intervention



33

Other Reportable Events

- ❖ Additional reportable events and interventions, which are not related to abuse, neglect, or exploitation, should also be reported using the REF
- ❖ Report the event to CDTN, the Supports Broker, or online to DDA using the REF Submission Link



34

Reporting Requirements

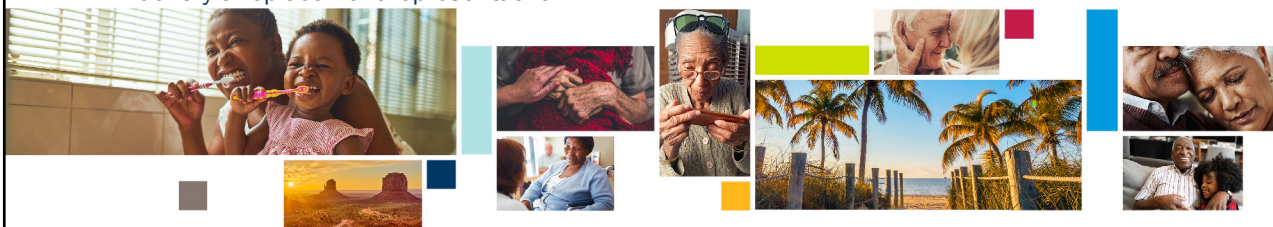
- ❖ CDTN must immediately report all instances of suspected abuse, neglect, and exploitation
- ❖ All reportable events occurring during the provision of HCBS services by a CDTN employee must be reported following REF reporting guidelines and copied to the member within the required timeframes



37

Reporting Requirements

- ❖ If a representative is alleged to have committed abuse, neglect, or exploitation:
 - ❖ They are removed from representative capacity during the investigation
 - ❖ During the removal, participation in the program is suspended unless another representative can be identified within five days
 - ❖ If the allegations are unsubstantiated, participation will be reinstated
 - ❖ If the allegations are substantiated, CDTN and the MCO will work with the person to identify a replacement representative



38

Abuse, Neglect, and Exploitation

Abuse is defined as, “The knowing infliction of injury, unreasonable confinement, intimidation, or punishment with resulting physical harm, pain, or mental anguish”

Some examples of abuse may be:

- ❖ The member is over-medicated or over-sedated
- ❖ A worker hits the member
- ❖ A worker yells at a member to hurry up or do things differently



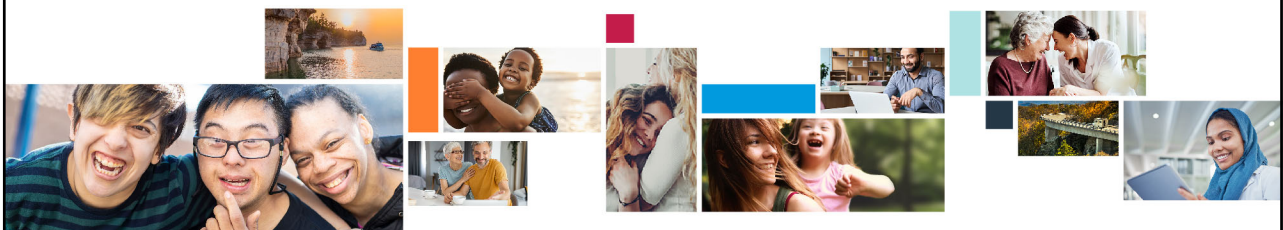
39

Abuse, Neglect, and Exploitation

Neglect is defined as, “A failure to provide goods or services necessary to avoid physical harm, mental anguish, or mental illness, which results in injury or probable risk of serious harm.”

Some examples of neglect may be:

- ❖ The member becomes dehydrated because a worker is not tending to their basic needs
- ❖ A worker does not keep the member’s personal dwelling free from hazards
- ❖ A worker leaves a member with balance problems alone in the bathroom



40

Abuse, Neglect, and Exploitation

Exploitation is defined as, “The deliberate misplacement, misappropriation, or wrongful, temporary, or permanent use of belongings or money with or without consent.”

Some examples of exploitation may be:

- ❖ A worker reads or withholds the member’s mail
- ❖ A worker has the member make purchases for them and does not repay the member
- ❖ A worker uses their relationship with the member to manipulate items from them, including jewelry, money, or other valuable personal belongings



41

Fraud, Waste and Abuse of Medicaid Funds

There are different types of misuse of Medicaid funds that you should be aware of:

- ❖ Fraud is using Medicaid funds to pay for something that is not allowed on purpose
- ❖ Waste is overusing, underusing, or misusing funds without knowing
- ❖ Abuse is behavior that results in Medicaid funds being used incorrectly or unnecessarily

The main difference between fraud and abuse is intent. There can be consequences, even if it was not done on purpose, including fines, disenrollment from the program, or jail.



42

Fraud, Waste and Abuse of Medicaid Funds

Fraud by a worker includes, but is not limited to:

- ❖ Being paid for care that the employee did not or is not allowed to provide
- ❖ Misrepresenting the hours worked/falsifying timesheets
- ❖ Using someone else's identity to work
- ❖ Helping someone else commit fraud



43

Fraud, Waste and Abuse of Medicaid Funds

Fraud by a member includes, but is not limited to:

- ❖ Allowing a worker to clock in and clock out for work without providing care
- ❖ Asking a worker to provide support or services to family members, or perform duties not outlined in the plan of care
- ❖ Receiving more units or hours of service than needed
- ❖ Approving worker time with the member is hospitalized or in a skilled nursing facility



44

Fraud, Waste and Abuse of Medicaid Funds

All program members, representatives, family members, workers, Supports Brokers, and Support Coordinators are responsible for reporting Medicaid fraud, waste, and abuse.

If you learn about fraud being committed you can report it to CDTN, the Supports Broker, or online.



45

Fraud, Waste and Abuse of Medicaid Funds

To report fraud and abuse online:

- ❖ Go to www.tn.gov/finance/fa-oig
- ❖ Click on “Report Fraud” on the left hand side of the page

You can also call the following numbers to report fraud or abuse:

- ❖ Office of the Inspector General (OIG) – 1-800-433-3982
- ❖ Tennessee Bureau of Investigation (TBI) – 1-800-433-5454



46



Thank you

