



Katie Beckett Member Training



1

Agenda

- ❖ Overview of the Katie Beckett program and self-direction
- ❖ The roles and responsibilities within the program and Consumer Direct Tennessee (CDTN)
- ❖ Reporting Requirements
- ❖ Time Approval in CareAttend and DirectMyCare



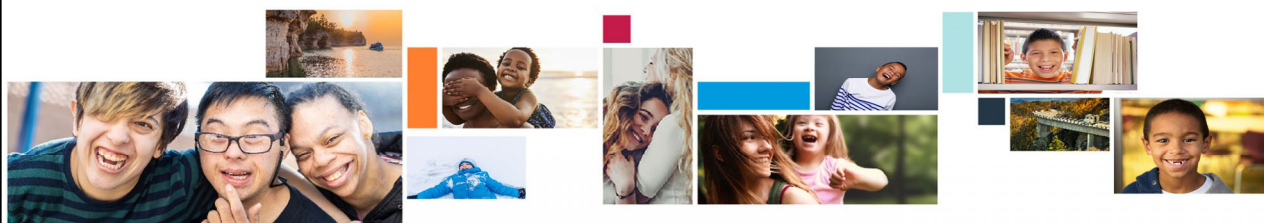
2



Overview

The TennCare Katie Beckett program is for children under the age of 18 with disabilities or complex medical needs who are not Medicaid eligible because of their parent's income or assets.

The Katie Beckett program is separated into two parts.



Katie Beckett Part A

- ❖ Will serve up to 300 children with the most significant disabilities or complex medical needs
- ❖ Children would receive full Medicaid benefits
- ❖ Children receive up to \$15,000 a year in home- and community-based services



5

Katie Beckett Part B

- ❖ Will serve up to 2,700 children with disabilities or complex medical needs.
- ❖ Children will not be enrolled in Medicaid. They will receive up to \$10,000 a year in services
- ❖ Families can choose from a variety of services that fit within their budget



6

Katie Beckett Overview

- ❖ Participants in Part A will have a Nurse Care Manager
- ❖ Participants in Part B will have a Department of Disability and Aging (DDA) Case Manager
- ❖ Both parts use a person-centered planning process



7

Self Direction

- ❖ Participants enrolled in the Katie Beckett Program can choose self-direction
- ❖ The Katie Beckett program Home- and Community-Based Services (HCBS) do not include home health or private duty nursing
- ❖ Both parts offer three service options:
 - ❖ Hourly Respite
 - ❖ Supportive Home Care
 - ❖ Community Transportation



8

Hourly Respite

- ❖ Offered as needed for caregiver relief
- ❖ Only applies for routine family or other caregivers that are not paid to support the member
- ❖ Can be up to 216 hours per member per calendar year



9

Supportive Home Care

- ❖ Offered as an on-going hourly service
- ❖ Provide someone to help with the member's personal care needs or daily living activities in your home or in the community
- ❖ Does not include school
- ❖ Part A has a collective limit of \$15,000 annually for these HCBS services
- ❖ Part B has a collective limit of \$10,000 annually for all services



10

Community Transportation

- ❖ Helps the member get around the community
- ❖ Can be used to pay for gas, bus fare, or taxi services
- ❖ Both parts have a limit of \$225 per month



11



Roles and Responsibilities

12

Nurse Care Manager/DDA Case Manager

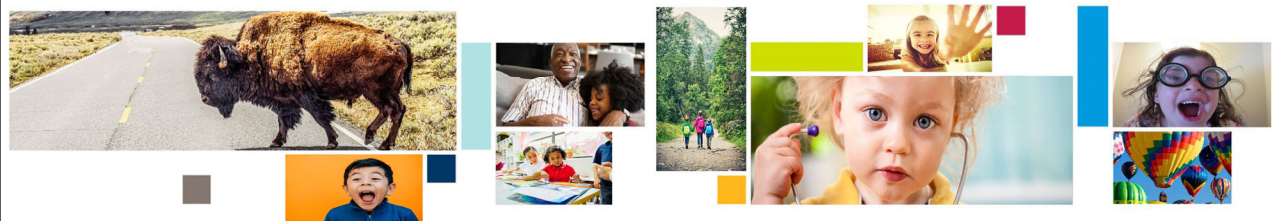
- ❖ Meeting with the family to identify needs
- ❖ Educating the member on the Katie Beckett program
- ❖ Assisting with assigning a representative
- ❖ Working with the member to develop a Person-Centered Support Plan (PCSP)
- ❖ Ensuring the consumer direction backup plan meets the member's needs



13

Nurse Care Manager/DDA Case Manager

- ❖ Authorizing individual budgeted services
- ❖ Receiving and reviewing all reports submitted by CDTN and the Supports Broker
- ❖ Maintaining monthly phone contact and completing face-to-face home visits
- ❖ Assisting members and representatives in understanding individual services
- ❖ Reviewing worker daily communication logs when in the home
- ❖ Ensuring the PCSP stays up-to-date



14

Supports Broker

- ❖ Assigned by Consumer Direct Tennessee (CDTN)
- ❖ Provides training and support to members and representatives on:
 - ❖ Understanding the program
 - ❖ Fulfilling the responsibilities of being an employer
 - ❖ Scheduling, training, and supervising consumer directed workers
 - ❖ Aiding in developing the initial backup plan



15

Supports Broker

- ❖ Provides training and support on (continued):
 - ❖ Annual fraud, waste and abuse prevention, identification, and reporting training
 - ❖ Reportable events reporting training
 - ❖ Electronic Visit Verification (EVV) and the CareAttend app
- ❖ Processes all member and worker paperwork
- ❖ Tracks First Aid and CPR certifications



16

Consumer Direct Tennessee (CDTN)

- ❖ Provides training and support to workers
- ❖ Serves as the Fiscal Employer Agent
- ❖ Pays workers on behalf of the program members
- ❖ Withholds and deposits taxes and files tax and labor reports
- ❖ Ensuring the consumer direction backup plan meets the member's needs
- ❖ Provides regular reporting on authorized units
- ❖ Responds to questions from members, representatives and workers

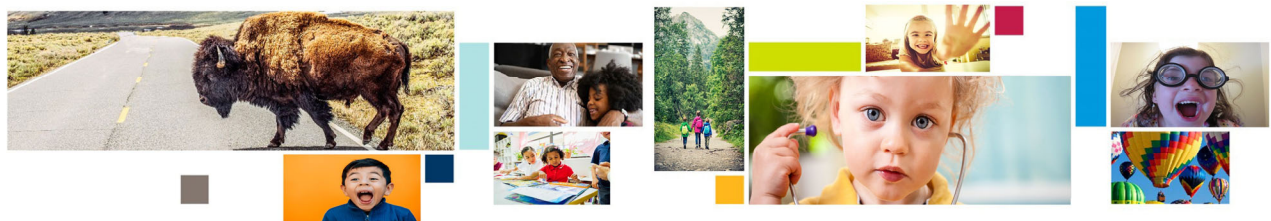


17

Consumer Direct Tennessee (CDTN)

- ❖ The CDTN website is available to assist with many other questions and concerns at:

www.ConsumerDirectTN.com



18



Dignity of Choice

- ❖ The right of a person to make an informed decision to engage in experiences which are necessary for personal growth
- ❖ The occurrence and reporting of a Reportable Event does not necessarily mean that anyone should have done something differently to prevent the Reportable Event
- ❖ The Katie Beckett program is designed to encourage members to pursue and achieve their goals, which can mean taking informed, reasonable risks



Reporting

- ❖ As a worker in a TennCare program, you are required to report any instances of Medicaid fraud and abuse, as well as the abuse, neglect, or exploitation of a member
- ❖ Reportable events are separated into Tier One and Tier Two events, with other events that also need to be reported.
- ❖ Any reportable event needs to be reported via a Reportable Event Form (REF) on the DDA website within four hours.



23

Tier One Events

Tier One events include:

- ❖ Alleged emotional or psychological abuse when medical intervention or treatment is necessary
- ❖ Alleged exploitation exceeding \$1000
- ❖ Alleged neglect which requires medical intervention or treatment and all neglect that is potentially felonious in nature when there is not an injury



24

Tier One Events

Tier One events include:

- ❖ Alleged physical abuse when medical intervention or treatment is necessary
- ❖ Alleged sexual abuse
 - ❖ Excluding when an exception is granted by DDA, members are required to immediately remove a worker or volunteer alleged to have acted in a manner consistent with physical or sexual abuse until DDA has completed their investigation



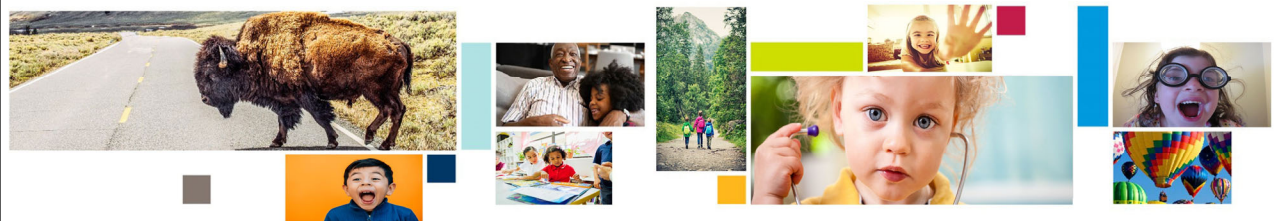
25

Tier One Events

Tier One events include:

- ❖ Unexpected or unexplained death of the member
- ❖ Serious injury of an unknown cause
- ❖ Suspicious injury in which abuse or neglect is suspected and requires medical intervention or treatment

If the member you are caring for is at immediate risk, please dial 911



26

Reporting Tier One Events

Tier One Reportable Events must be reported no later than four hours after the occurrence or discovery of the event and reported to DDA's Abuse Hotline (1-888-633-1313), the Department of Children's Services (DCS) or law enforcement as required by law. Report the event to CDTN, the Supports Broker, or online to DDA using the REF Submission Link.

- ❖ For members enrolled in Katie Beckett Part A, Tier One events must be reported to the Nurse Care Manager within four hours. For members enrolled in Katie Beckett Part B, Tier One events must be reported to the DDA Case Manager within four hours



Reporting Tier One Events

If a Tier One Reportable Event, or any other event, poses an immediate threat to the health and safety of a member, workers are required to remain with the member until the threat is removed or the member receives needed medical treatment, if appropriate.

All abuse, neglect, and exploitation events also must be reported to Department of Children's Services (DCS) within four hours.



The Department of Children's Services

To contact DCS regarding a reportable event, use their toll-free number:

- ❖ 1-877-237-0004

Additionally, local offices can be reached with these phone numbers

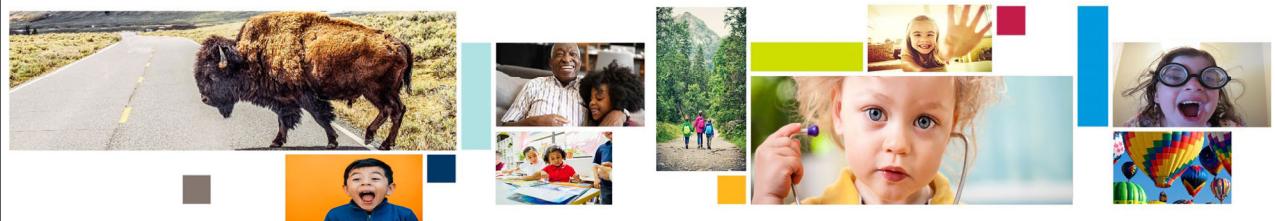
- ❖ Knoxville – 1-865-329-8879
- ❖ Chattanooga – 1-423-296-1234
- ❖ Nashville – 1-615-360-4320
- ❖ Memphis – 1-901-578-4001



The Department of Children's Services

Callers will need to provide:

- ❖ Name of the member
- ❖ Address
- ❖ Age
- ❖ Phone Number
- ❖ Specifics of the reportable event



Tier Two Events

- ❖ For members enrolled in Katie Beckett Part A, Tier Two events must be reported to the Nurse Care Manager within one business day
- ❖ For members enrolled in Katie Beckett Part B, Tier Two events must be reported to the DDA State Investigator within four hours
- ❖ Report the event to CDTN, the Supports Broker, or online to DDA using the REF Submission Link



31

Tier Two Events

Tier Two events include:

- ❖ Alleged emotional or psychological abuse when no medical intervention or treatment is necessary, crisis intervention is not required, and the member is not at continued risk
- ❖ Alleged exploitation valued between \$250 and \$1000
- ❖ Alleged neglect when no medical intervention or treatment is necessary, and the member is not at continued risk of serious harm



32

Tier Two Events

Tier Two events include:

- ❖ Alleged physical abuse when no medical intervention or treatment is necessary, and the member is not at continued risk of serious harm
 - ❖ CDTN, after seeking the member's preference, shall determine at their discretion and in accordance with their policy whether to remove a worker or volunteer named in a Tier Two reportable event from any or all direct support until DDA has completed their investigation



33

Tier Two Events

Tier Two events include:

- ❖ Suspicious injury in which abuse or neglect is suspected but does not require medical treatment or intervention

All Tier Two events must be reported to DDA Event Management by the Nurse Care Manager or CDTN via the REF as soon as possible, but within one business day



34

Other Reportable Events

- ❖ For members enrolled in Katie Beckett Part A, other reportable events must be reported to the Nurse Care Manager within one business day
- ❖ For members enrolled in Katie Beckett Part B, other reportable events must be reported to the DDA Case Manager within four hours
- ❖ Report the event to CDTN, the Supports Broker, or online to DDA using the REF Submission Link



35

Other Reportable Events

Other reportable events include:

- ❖ Administration of routine psychotropic medication without consent
- ❖ Emergency situations including fire, flooding and serious property damage that result in harm or risk of harm to the member
- ❖ Fall with injury – minor or major
- ❖ Medication variance or omission
- ❖ The member goes missing for greater than one hour



36

Other Reportable Events

Other reportable events include:

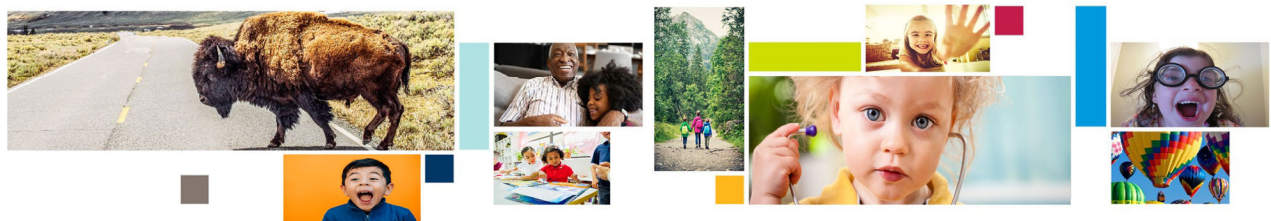
- ❖ Failure to implement emergency backup plans
- ❖ Unsafe environment
- ❖ Vehicle accident – minor or serious
- ❖ Victim of fire
- ❖ Required use of a behavior safety intervention or restrictive behavioral procedure that is not captured as an appropriate response in the PCSP/ISP



37

Reporting Requirements

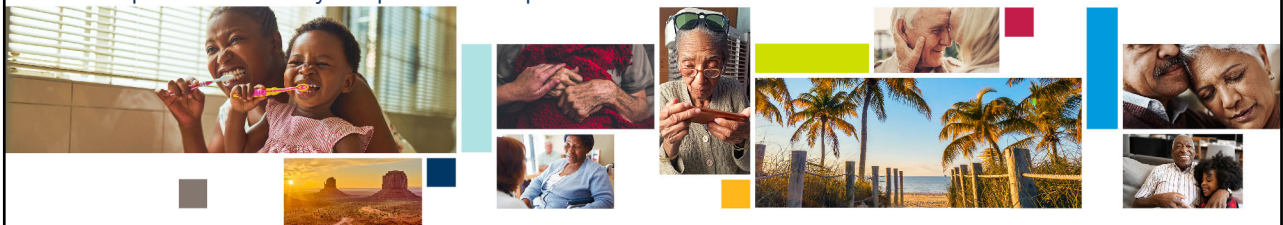
- ❖ CDTN must immediately report all instances of suspected abuse, neglect, and exploitation
- ❖ All reportable events occurring during the provision of HCBS services by a CDTN employee must be reported following REF reporting guidelines and copied to the member within the required timeframe



38

Reporting Requirements

- ❖ If a representative is alleged to have committed abuse, neglect, or exploitation:
 - ❖ They are removed from representative capacity during the investigation
 - ❖ During the removal, participation in the program is suspended unless another representative can be identified within five days
 - ❖ If the allegations are unsubstantiated, participation will be reinstated
 - ❖ If the allegations are substantiated, CDTN, DDA, and/or the MCO will work with the person to identify a replacement representative



39

Abuse, Neglect, and Exploitation

Abuse is defined as, “The knowing infliction of injury, unreasonable confinement, intimidation, or punishment with resulting physical harm, pain, or mental anguish”

Some examples of abuse may be:

- ❖ The member is over-medicated or over-sedated
- ❖ A worker hits the member
- ❖ A worker yells at a member to hurry up or do things differently



40

Abuse, Neglect, and Exploitation

Neglect is defined as, “A failure to provide goods or services necessary to avoid physical harm, mental anguish, or mental illness, which results in injury or probable risk of serious harm.”

Some examples of neglect may be:

- ❖ The member becomes dehydrated because a worker is not tending to their basic needs
- ❖ A worker does not keep the member’s personal dwelling free from hazards
- ❖ A worker leaves a member with balance problems alone in the bathroom



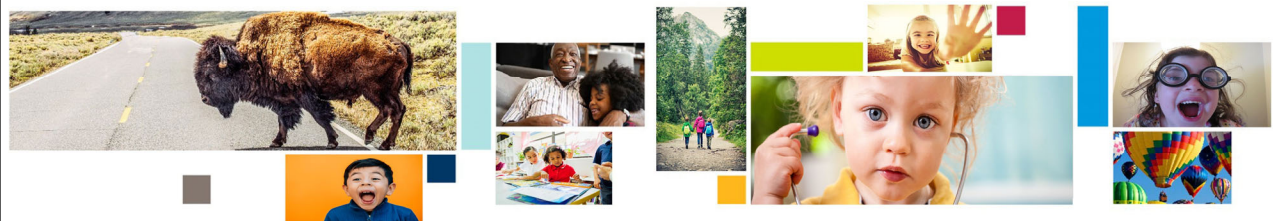
41

Abuse, Neglect, and Exploitation

Exploitation is defined as, “The deliberate misplacement, misappropriation, or wrongful, temporary, or permanent use of belongings or money with or without consent.”

Some examples of exploitation may be:

- ❖ A worker forces the member to provide labor
- ❖ A worker involves the member in criminal activity
- ❖ A worker uses the member to solicit donations



42

Fraud, Waste and Abuse of Medicaid Funds

Fraud by a member includes, but is not limited to:

- ❖ Allowing a worker to clock in and clock out for work without providing care
- ❖ Asking a worker to provide support or services to family members, or perform duties not outlined in the plan of care
- ❖ Receiving more units or hours of service than needed
- ❖ Approving worker time with the member is hospitalized or in a skilled nursing facility

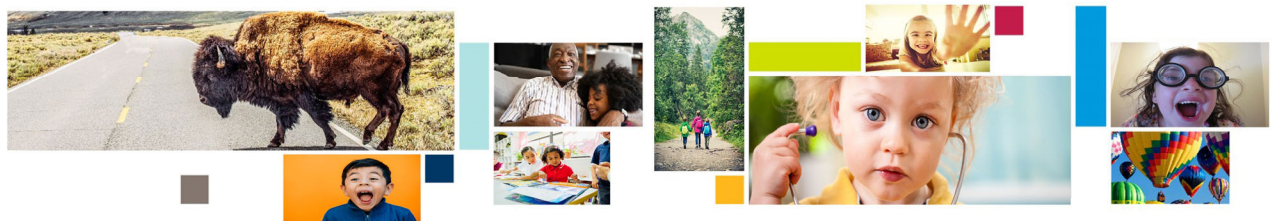


45

Fraud, Waste and Abuse of Medicaid Funds

All program members, representatives, family members, workers, Supports Brokers, and Nurse Care Managers/DDA Case Managers are responsible for reporting Medicaid fraud, waste, and abuse.

If you learn about fraud being committed you can report it to CDTN, the Supports Broker, or online.



46

Fraud, Waste and Abuse of Medicaid Funds

To report fraud and abuse online:

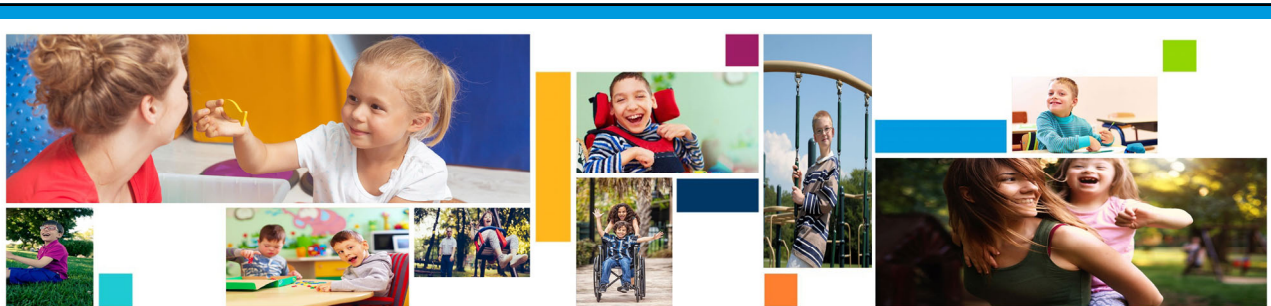
- ❖ Go to www.tn.gov/finance/fa-oig
- ❖ Click on “Report Fraud” on the left hand side of the page

You can also call the following numbers to report fraud or abuse:

- ❖ Office of the Inspector General (OIG) – 1-800-433-3982
- ❖ Tennessee Bureau of Investigation (TBI) – 1-800-433-5454



47



Thank you



48